



Maa Youshoda Equipments Pvt Ltd



PRODUCT CATALOGUE

About Us

MYEPL is a well known company that specializes in the production and distribution of Genuine parts for road construction equipments. We are using the most modern technology. The wear parts are kept in computer - controlled high rack storage areas for immediate shipment by courier, truck, ship or plane. We also carry wear on road paving equipments.

Quality

Our motto is “Committed to Time and Quality”. We are determined to provide our clients with premium quality products and so, we are well prepared to explore new market demands with all the zeal and passion involving our skill and experience of many years, combined with today’s modern techniques. We dedicate ourselves to serve the customer to his satisfaction.

MYEPL has become a trustworthy road equipment and machinery spare parts supplier against the strong competition from other precursors in this field.

We provide all types of Spare Parts for the following machines and brands

HYDRAULIC EXCAVATOR

CAT KOBELCO KOMATSU TATA HITACHI
VOLVO L&T CASE DUSAN HYUNDAI

WHEEL LOADER

CAT LUIGONG VOLVO TATA HITACHI
JCB HINDUSTAN LOADER

ROLLER

DYNAPAC JCB HAMM VOLVO
IR L&T GREAVES BOMAG

WMM PLANT

APOLLO MACONS OTHER LOCAL MADE

MILLING MACHINE

CAT WIRTGEN BOOMAG

BATCHING PLANT

SCHWING STETTAR GREAVES ACQUARIUS
MAXMACK CONMET AKONA APOLLO

DOZER

CAT KOMATSU

PAVER FINISHER

CAT VOGELE DYNAPAC VOLVO
BITELLI APOLLO

MOTOR GRADER

CAT SANY KOMATSU

DBM PLANT

MARINI LINOFF ALLWYN APOLLO

CRUSHER

MESTO POWERSCREEN PUNZLLONA
ROCKSTAR INDIA OTHER LOCAL MADE

ENGINE

CAT CUMMINS DEUTZ
KIRLOSKAR PERKINS



MAA YOUSHODA Equipments Pvt. Ltd.



MECHANICAL PAVER FINISHER



www.myepl.in

<https://www.facebook.com/maayoushoda.equipments>

<https://www.instagram.com/myepl2014/>

PAVER FINISHER

WM-6 HES is fitted with a power steering for ease of operation, 76 HP & 105 HP @2200rpm engine for enhanced power and oil air breaks. The bearing pedestal



is protected from dust. engine for enhanced power and oil air breaks. The bearing pedestal is protected from dust. The hydraulic extension are eliminated and the screed width can be easily varied between 2.5 M to 4.5 M hydraulically.

LONG LIFE

The sturdy construction using quality components leads to long years of trouble - free performance, even in adverse condition





Operating Height	:	3000mm
Shaping Height	:	2280mm
Length	:	5550mm
Operating Width	:	3100mm
Shipping Width	:	2860mm
Weight	:	9500kgs
Engine Mae	:	Kirlosker 4 R1040 or equivalent
Engine Out Put	:	76HP@2200RPM 105HP@2200RPM
Bttery	:	12volts-15 Plate (Heavy Duty)
Tyre	:	Front 2 Nos. Solid Rear 2 Nos. (Penumatic)
Paving Thickness	:	10 to 200mm
Vibratory Paving Screed	:	Hyd. Extending Screed
Screed Vibration	:	0 to 3000 per Min.
Fuel Tank	:	80Ltr.
Hydraulic oil Tank	:	100Ltr.
Steering	:	Power (Hydraulic)
Hopper Capacity	:	4 Cubic Meter
Main Transmission	:	Four Speed Gear Box
Screed Crown	:	(-1 to +3)
standard Accessories	:	Tool Box

KERB PAVER

Slipform Tyre machine
Model SKM- 540



**A Unique Combination Of
Quality & Productivity**

SOME FEATURES OF MYEPL SKM - 540

MYEPL Slipform Kerbing Machine Model 540 is a most versatile machine for making different types of Kerb for highway, footpath (122 CMS wide 48') & small box gutters etc.

The machine is basically self-propelled driven by a compact water cooled diesel engine, having a rubber padded crawler track driven by a powerful hydraulic motor with planetary gear box with breaking system. The machine is equiped with fully proportional automatic electronics control. The machine is supplied with quick change mould mechanism. Mould can be changed within 30 minutes for paving a new mould profile. The machine is equipped with world class fully variable vibrators to ensure compact & easy concrete flow.

MYEPL SKM 540 is a low profile machine and can be fed directly by truck mixer. Conveyors or augers are not necessary. The operator is well positioned to see all facets of the operation. Adjustment to speed and vibrators are quickly verified because the formed concrete is right beside the operator. Machine can lay on wet mix and DBM layers as well as reinforcement and gutter section.

Machine perform with low fuel consumption and fast working speed as well as travelling speed.



WORLD CLASS COMPONENTS

YANMAR Diesel Power	Quiet & Reliable
REXROTH hydraulic Pumps	Top Quality
WYCO Vibrators	Best Performance
MOBA Sensing System	Used by Pavers World Wide
FAIRFIELD “ Torque Hub”	A Field Leader
PARKER Drive Motor	Accepted World Wide
FILTREC Filtration System	Best Quality

YANMAR TNV SERIES DIESEL ENGINE



FULLY HYDROSTATIC DRIVE





TECHNICAL SPECIFICATION

Kerb Laying Capacity	Maximum 750mm(W)x575mm(H)
Engine	Yanmar make water coolede diesel engine generating 36 HP(27.2KW)
Vibrators	Wyco USA
Hopper Capacity	0.5 cubic meters
Electrical System	12 V DC, Battery : 75 AH
Steering Type	Power Steering
Sensing	Moba Control System
Breaking System	Through planetary gear box with integrated hydro motor and brake
Cylinders	Lift Front and Steer 12" x 3"
Capacities	Fuel 46 ltr / Hydraulic 120 ltr
Wheels	Heavy duty solid rubber tyres on heavy duty rims. Cast steel hubs and heavy duty Stub axles on rocker beam for more consistent grade control
Speed	Operating speed - 2/3 mtr/min & Travel speed 15 mtr/min
Shipping dimensions(LxBxH)	3870 MM (12'8") x 2305 MM (7'7") x 1440 MM (4' 9")
Shipping weight	3950 kg



KERB PAVER MACHINE

(SKM - 60)



KERB CUTTING MACHINE



KERB PAVER MACHINE

Engine	16 HP Petrol Engine
Steering Control	Auto / Manual
Height Control	Auto / Manual
Hydraulic Pump	Variable Displacement Axial Piston Pump
Drives	Main Drive-5/8" Pitch Duplex Chain/Hydraulics V Belt
Solenoid Valves	12 V.D.C.
Compaction Method	By Ramming Mechanism
Laying Capacity (W x H)	2.4 mtr
Minimum Radius Of Kerb	600x475 mm Max. & 175x475 mm Min.
Laying Speed	55 mtr / Hour
Stroke / Min	25 max.
Size Of Tyres	4.00x8-6 ply -4 nos.
Petrol Tank Capacity	8.5 ltrs
Hydraulic Tank Capacity	6.5 ltrs
Slump Range	Zero Slump
Details Of Vibrator	Nil
Fuel (Petrol) Consumption	2.6 ltrs / Hours
Accuracy	± 3 to 5 mm
Length (Without Mould)	1945 mm
Length (With Mould)	2715 mm
Height	930 mm
Width	1155 mm
Weight With Mould	915 kgs.
Material Feeding (Concrete)	By Transit Mixer or a Flat Bed Truck (Tractor Trolley)
Charge Hopper Capacity	0.21 m ³
Moulds	Bolt on M.S.Moulds to Customer Specification
1. Mould Size (LxWxH)	770x760x610 mm
2. Wt. Of Mould + Accessories	78 kgs. + 58 kgs.
3. Changing Time Of Mould	35 Minutes
Life Of Machine (Approx)	4-5 Years

KERB PAVER MACHINE

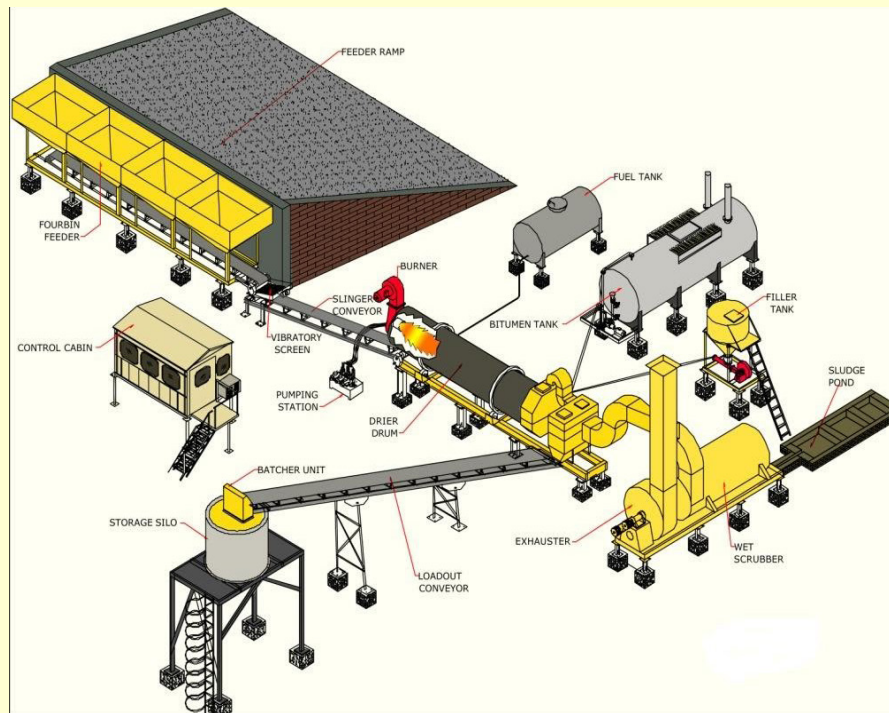
Life Of Engine (Approx)	Reconditioning After One Year
Life Of Mould (Approx)	50-75 kms.
List Of Consumables	Petrol, Hyd Oil, Engine Oil, Gear Oil & Grease
Accessories	String Line Assembly, Finishing Tools
List Of Spares Required In Stock	MicroSwitch, Air Filter, Oil Filter, Chain, Chain locks, V Belts, Spark Plug, Chain Sprocket, Toggle Switches, Pilot Lamp Holder With Blub etc.

KERB CUTTING MACHINE

ENGINE TYRE & POWER	Petrol, Hyd4.5 HP (Petrol Start and Petrol Running) / Diesel Engine
TRANSMISSION	"V" Belt Drive (Double Belt)
BLADE / SIZE	50 x 610 x 5 mm /24"
CUTTING METHOD	Rack & Pinion (Forward & Reverse)
CUTTING SIZE	Maximum height 600 mm x Width 200 mm
CUTTING SPEED	Maximum 50 to 60 Cuts per hour



Asphalt Drum Mix Plant



Asphalt Drum Mix Plant Technical Specification

Description	DM-45 (40-60TPH)	DM-60 (60-90TPH)	DM-90 (90-120TPH)
Four Bin Feeder			
No. Of Bins	4	4	4
Storage Capacity	32 Tons	40 Tons	54 Tons
Auxiliary Drive Motor	1.5 KW x 4 Nos.	1.5 KW x 4 Nos.	1.5 KW x 4 Nos.
Auxiliary Conveyor Belt	450 mm x 2.5 mtrs. x 3 ply	450 mm x 2.92 mtrs. x 3 ply	450 mm x 2.92 mtrs. x 3 ply
Auxiliary Conveyor Belt	SMSR x 4 Nos.	SMSR x 4 Nos.	SMSR x 4 Nos.
Gear Box			
Gathering Drive Motor	3.75 KW	3.75 KW	5.5 KW
Gathering Gear Box	SMSR	SMSR	SMSR
Gathering Conveyor Belt	500 mm x 24 mtrs x 3 ply	600 mm x 26 mtrs x 3 ply	600 mm x 26 mtrs x 3 ply
Bin Vibrator (1 No.)	0.75 KW x 1440 rpm	0.75 KW x 1440 rpm	0.75 KW x 1440 rpm
Feeding Capacity	100 tph	150 tph	200 tph
Overall Dimensioin (Approx)	12.10 mtrs x 2.10 mtrs x 2.32 mtrs	13.13 mtrs x 2.38 mtrs x 2.45 mtrs	13.13 mtrs x 2.63 mtrs x 2.55 mtrs
Total Connected Load	10.50 KW	10.50 KW	12.25 KW
Over Size removal Screen			
Drive Motor	0.75 KW x 750 rpm	0.75 KW x 750 rpm	0.75 KW x 750 rpm
Wire Mesh	65 mm x 65 mm	65 mm x 65 mm	65 mm x 65 mm
Slinger Conveyor			
Conveyor Drive Motor	3.75 KW	3.75 KW	3.75 KW
Conveyor Drive Gear Box	SMSR	SMSR	SMSR
Conveyor Belt	500 mm 15 mtrs x 3 ply	500 mm 16 mtrs x 3 ply	600 mm 18 mtrs x 3 ply
Thermo Drum Unit			
Drive Motor	15.00 KW	18.75 KW	30.00 KW
Drive Gear Box	Heavy Duty Worm Gear	Heavy Duty Worm Gear	Heavy Duty Worm Gear
Drive Chain Pitch	63.5 mm	78.1 mm	78.1 mm
Main Burner Connected	250 lph / 3.75 KW	350 lph / 5.62 KW	550 lph / 11.25 KW
Power			
Exhauster	10500 cfm	14500 cfm	14500 cfm
Exhauster Drive Motor	15.00 KW	15.00 KW	18.75 KW
Multi Cone Primary Dust Collector			
No. Of Cones 15	20	21	
Dust Screw Drive Motor	1.5 KW	1.5 KW	1.5 KW
Fuel Tank			
Capacity	2000 liters	4000 liters	8000 liters
L/O Conveyor Belt-HR Grade			
Gob Hopper Capacity	1.0 ton	1.0 ton	1.5 ton
Hyd. Power Pack/Conveyor Drive	2.25 KW / 3.75 KW	2.25 KW / 3.75 KW	2.25 KW / 5.5 KW
Bitumen Tank			
Capacity & Shape	15 tons (U shape)	20 tons (U shape)	20 tons (U shape)
Bitumen Drive Motor	3.75 KW	3.75 KW	3.75 KW
Bitumen Gear Box	Heavy Duty OWrm Gear	Heavy Duty OWrm Gear	Heavy Duty OWrm Gear
Bitumen Pump (Jacketed)	50.8 mm x 50.8 mm	50.8 mm x 50.8 mm	50.8 mm x 50.8 mm
Hot Oil Drive Motor	0.75 KW	0.75 KW	0.75 KW
Hot Oil Pump	19.05 mm x 19.05 mm	19.05 mm x 19.05 mm	19.05 mm x 19.05 mm

Asphalt Drum Mix Plant Technical Specification

Description	DM-45 (40-60TPH)	DM-60 (60-90TPH)	DM-90 (90-120TPH)
Mieral Filler Unit			
Drive Motor	0.75 KW	0.75 KW	0.75 KW
Drive Gear Box	Heavy Duty Work Gear	Heavy Duty Work Gear	Heavy Duty Work Gear
Rotary Valve	150 mm	150 mm	150 mm
Chain Pitch	25.4 mm	25.4 mm	25.4 mm
Capacity	1 M ³	1 M ³	1.5 M ³
Air Compressor	3.75 KW	5.62 KW	5.62 KW
Total Connected Load/ DC Set	65.00 KW / 82.5 KW	73.36 KW / 110 KW	101.24 KW / 125 KW
Open land Requirement	35 mtrs x 35 mtrs	35 mtrs x 35 mtrs	40 mtrs x 40 mtrs

Accessories

CV Series Wet Dust Collector

Type : Ventury	Bitumen Tank	Heating Type	Capacity 15 / 20 / 25 / 30 / 50 Tons
Exhauster Power : 15/18.75/30 KW			Direct / Hot Oil Heating Type
Water Pump : 3.75 KW	Hot Oil Heater	Type	Normal Pressure Horizontal Tubular Boiler
Dust Emission : < 150 mg / Nm ³		Capacity	500 000 Kcal / Hr
Overall Dimension Without Ducts	Mot Mix Storage Silo	Capacity	10 / 15 / 20 / 50 Tons
			4500 mm (L) x 1800 mm (W) x 2300 mm (H)



Asphalt Mobile Drum Mix Plant

SERIES	CAPACITY
MDM	20-30tph
MDM	30-40tph



This is Mobile Automatic Asphalt Plant 20-30-40 TPH OR 30-40 TPH it is ideal for small work and hilly terrains. This Machine does not even require any erection commissioning and requires less no. Of other infrastructure such as Dumpers.

Air Pollution Control Unit

Hot gas from exhaust fan Thermo Drum enters into Pollution Control Unit, Very high pressured Jet sprayed water on the gases thus, gases from in a slurry and are diverted to the sludge tank. Remaining gases released through exhaust by reducing the air pressure.



Computerised Panel

Multi-Channel Tem. Scanner to Display smoke Temp., Final Mix Temp. And Bitumen Temp.

All Motor Starters, Contractors, MVBS Over Load Relays, Switches, Amp./Volt. Meters, Signal Lamps, Sequencer and Timer are all used of Standard Company make only.

Microprocessor has all provision to store and edit Production Data and Operating Sequences.

Panel with Elegant Look and Finish.



Vibrating Screen

Single deck type vibrating screen removed over-size material and feeds the remaining material to charging conveyor. Different sizes of screen can be provided for removing oversize material from different kind of mix.



Slinger Conveyor

Single Conveyor conveying aggregate materials from Four Bin Feeder to Pugmill unit. Conveyor belt is M24 Grade of MRF/Dunlop make.



Loadout Conveyor

Truck loading will be by an inclined load out conveyor with heat resistant belting equipped with a Gob Hopper with Hydraulically operated cam shell gate to provide surge capacity when changing trucks and controls segregation in the mix



Control Cabin

Control Cabin is fabrication with M.S. Structure and Insulated by wood. Control Cabin is housed in a Insulated weather proof cabin with many Glass Windows for full view of entire Plant.



Truck Mounted Bitumen Sprayer

Tank Capacity	: 4000/6000/7000 Liters with Glass Wool insulation
Spraybar Width	: 2.5 mtr. Standard to 4.0 mtr. Extn. Pneumatically operated
Distance of Nozzles	: 225 mm
Adjustable Height	: 300 mm
Heating	: Oil Fire Jet Burner (Manual)
Prime Mover	: Kirlosker OR Equivalent 25 HP@ 1800 RPM Air Colled Diesel Engine,With Clutch
Air Compressor	: Elgi / IR or equivalent 2 Cylinder, 3HP working pressure 10.5 kg/cm ² cap. 225 Liters.
Temp. Gauge	: 1 to 250° C
Fuel Tank	: 120 Liters
Bitumen Pump	: 2" x 2" Positive Displacement Gear Pump of 400 Ltr./ Min. Cap



Tractor Mounted Bitumen Sprayer

Bitumen Tank with dual fuel heating facility (Wood Fired Bhatti a bottom of the Tank & Oil Burner mounted on Heating Pipe flange)

SERIES	CAPACITY
AI-1500	1500 Liters
AI-2500	2500 Liters
AI-3000	3000 Liters



Broomer Mechanical / Hydraulic

An attachment on Tractor
 Sweeping Width 2100 mm
 Sweeping Speed 5 to 8 km / hr
 Diameter of Brush 450 mm
 Nylon Material or Steel Wire Brush
 Chassis and linkage holder are entirely made of Steel
 Transportation on all types of vehicle
 Mechanical drive from the wheels of the broomer
 The sweeping job is done in the forward direction,
 same as the machine excellent visibillity for the operator
 dure to the anti dust gourds
 Screws for adjustment of the pressure to the brush



Wet Mix Plant



For pavement base & sub base construction, we offer Wet Mix Plant (Soil Stabilisation Plant) to produce homogenous mixture of sand, cement and water with aggregates / gravels.

We manufacture Wet Mix Plants in output capacities of 100 TPH, 150 TPH, 200 TPH & 250 TPH as per the Indian domestic and international market standard to produce best quality mix material at low power consumption. They are fully automatic as per modern technology and operated by user friendly electronic control panel. Modular construction ensures ease of operation & maintenance.

MODEL	SWM-100	SWM-150	SWM-200	SWM-250
CAPACITY	100 TPH	150 TPH	200 TPH	250 TPH

Standard components of one set Wet Mix Plant consists of : Aggregate Feeder Bins

Single Deck Vibratory Screen
 Charging Conveyor
 Twin Shaft type Pugmill Mixer
 Mix Material Output Conveyor
 Storage Silo
 Water Pump
 Control Panel and
 Control Cabin

As an experienced Wet Mix Plant manufacturer and supplier, we also offer tailor made solution to our customers.

Concrete Batching Plant



We supply fully Automatic Stationary and Mobile Concrete Batching Plant with options of Reverse Drum Mixer, Pan Mixer and Twin Shaft Mixer, in various models and output capacities to suit the varied construction project requirements.

Concrete Batching Plant manufactured by MYEPL is compact and versatile for producing homogeneous concrete mix for construction and infrastructural projects. Some of our models are suitable for ready mix concrete production and can be used as RMC Plant.

The concrete batching plant is available in various output capacities of 20m³/hr., 30m³/hr., 45m³/hr., and 60m³/hr., designed for operations under extreme conditions with highest performance.

The concrete batching plant is composed of adequate capacity gravel & sand hoppers with pneumatically operated gates, weighing conveyor beneath hoppers suspended on electronic load cells, rubber belt type charging conveyor, pan / twin shaft mixer unit, water tank, additive tank, cement silo with screw conveyor, PLC based control panel.

All Concrete Batch Plants are equipped with separate electronic weigh batching system with PLC based controls for aggregates, cement, water and additive. Separate weigh batching system facilitates parallel dosing of ingredients thus reducing cycle time and increasing productivity.

Pan type and Twin shaft type mixers are designed to provide economy, durability, and consistency in the production of high quality concrete.

Reversible Concrete Mixer

We are offering reversible concrete mixer is built for easy and fast concreting on concrete jobs like, building, flooring, road projects, bridges, infrastructure projects, canal projects up to the satisfactory performance. The mixer design is rationalized for easily manorable mixer requiring very less maintenance, a very practical product of MYEPL can produce wet concrete from 8m³/hr. To 12m³/hr. Capacity. This is fully automatic mixer with electronic load cell type, weighs batching system for input ingredients.

We would like to introduce MYEPL as one of the leading Manufacturer & Exporters of Road & Building Construction Machinery & Equipment's last many years. Our Equipment have long life because we using latest Technology and Machinery to Manufacturing plant, & Mfg.





MAA YOUSHODA Equipments Pvt. Ltd.

**Ultimate in Spare Parts of Earthmoving, Mining and
Construction Equipments**

**Deals in old and used all Road Construction Plants &
Mechinery**

Distributor In India



DONGYANG

YCR

HS

TURBO

Jeil SNA

BOS

www.myepl.in

DEALERS NETWORK

**DELHI, CHANDIGARH, KOLHAPUR, KOTA, BHARATPUR, JAIPUR, SURAT, RAJKOT, VADODARA,
AHMEDABAD, MUMBAI, PUNE, HYDERABAD, INDORE, BHOPAL, SATNA, GWALIOR, KATNI,
BANGALURU, JHANSI, BHUBNESHWAR, CALICUT**



www.myepl.in

<https://www.facebook.com/maayoushoda.equipments>

<https://www.instagram.com/myepl2014/>



Jeil SNA

VIBRO BREAKER

MAKE KOREA

More noiseless attachment

Protect the excavator from vibration shock by double air cushion

Check valve : it makes auto return oil flow when come into high oil flow from excavator for protect Motor and seal kit

Waterproof : do not need any cost

It can ripping and gathering two function also broken rock

We are using chisel type for long life span & low maintenance

KTVB200



KTVB300



KTVB400



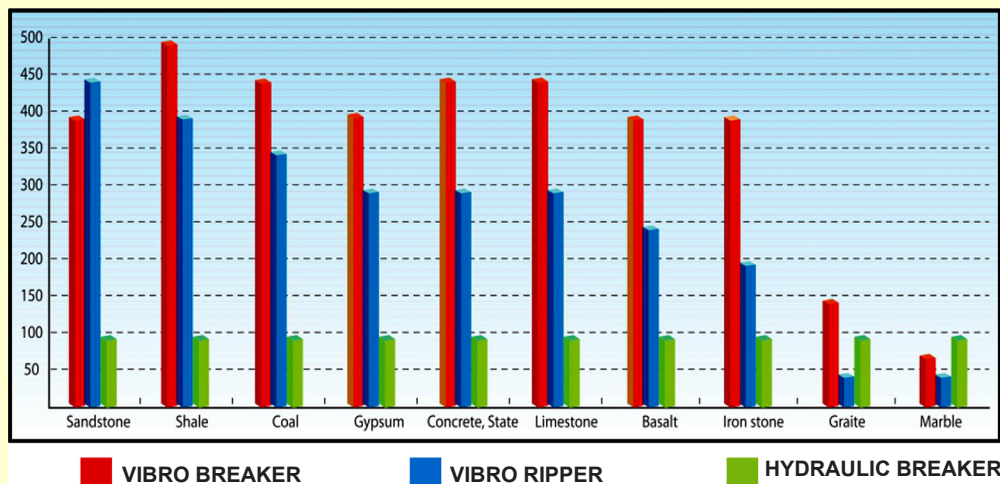
KTVB500



Model	Unit	KTVB200	KTVB300	KTVB400	KTVB500
Suitable Excavator	ton	18~26	25~35	34~45	45~60
Frequency	bpm	2800~3500	2500~3500	2000~2700	1900~2300
Weight (Incl. Mounting Cap)	kg	2900	3900	4900	5800
Max. Oil Pressure (Min. Setting Pressure)	bar/psi	350/5076 (300)/(4351)	350/5076 (300)/(4351)	350/5076 (300)/(4351)	350/5076 (300)/(4351)
Return Pressure	bar/psi	6/87	6/87	6/87	6/87
Max. Operating Oil Flow	ℓ/min	200	240	280	320
Dimension (L x W x H)	mm	2625 x 1410 x 880	2965 x 1580 x 950	3260 x 1695 x 1035	3389 x 1576 x 1128
Tool Diameter	mm	130	140	150	160

WORKING PRODUCTIVITY

VIBRO BREAKER VS VIBRO RIPPER VS HYDRAULIC BREAKER



DONGYANG

ROCK BREAKERS MAKE KOREA



DYB-600S

10 Ton Class
ROCK BREAKER



DHB-800S

20 Ton Class
ROCK BREAKER



DYB-400S

ROCK BREAKER
(Backhole Loader)



DYB-300

(Backhole Loader)
Specially Designed Frame
For Best Productivity

DESCRIPTION	UNIT	DYB-600S	DHB-800S	DYB-400S	DYB-300S
Operating Weight	kg	880	1668	405	304
	lb	1936		891	
Overall Length	mm	2361	2755	1684	1682
	inch	93		66.3	
Operating Pressure	bar	150~170	160~180	140~160	140~160
	psi	2176~2466		2331~2321	
Required Oil Flow	ℓ/min	80~120	120~160	40~70	30~45
	gal/min	21.1~31.7		10.8~18.4	
Impact Rate	bpm	400-700	400-700	500-800	500-800
Impact Energy	joule	2630	5830	945	620
Hose Diameter	mm	19	25	12	
	inch	3/4		1/2	1/2
Tool Diameter & Weight	mm	100	135	75	68
	inch	3.9		3	
	kg	60		26	
Applicable Carrier	m ³	0.45~0.6	16~25	6~9	4.0~7.0
	ton	11~16			
	ft ³	16~21.2			



QUICK COUPLER

FOR EXCAVATORS
COMBINES STABILITY
AND AGILITY

DEMOLITION

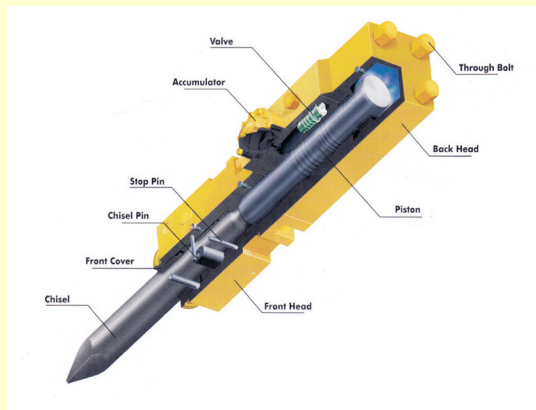
ESSENTIAL ATTACHMENT
FOR BUILDING
DEMOLITION





ROCK BREAKERS
KOREAN TECHNOLOGY

Designed and Engineered to ensure maximum performance and to meet market needs. With high durability, you can confirm constant impact energy at steady oil flow rate. Since the control valve housing is mounted out on its main body, it provides customers more dependability during its use.



BRAND PARTS



DESCRIPTION	UNIT	BOS-300S	BOS-400S	BOS-600S	BOS-800S	BOS-800-1S
Applicable Excavator	Ton	4~7	6~9	11~15	18~21	18~26
Operating Weight	Kg	275	295	795	1450	1825
Main Body Weight	Kg	151	210	471	754	911
Required oil Flow	l/min	40~70	50~90	80~110	100~150	120~180
Setting Pressure	bar	170	180	210	230	220
Operating Pressure	bar	110~140	120~150	150~170	160~180	160~180
Impact Rate	bpm	500~900	400~800	350~700	350~600	350~500
Tool Shank Diameter	mm	68	75	100	135	140
Back Head Pressure	bar	16	16	16	16	16
Impact Energy	Kg l-m	70	92	214	363	429

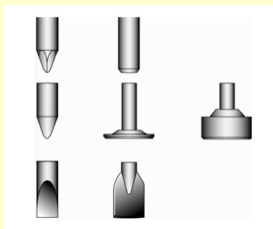
UNDERCARRIAGE PARTS

We offer ultimate range of undercarriage parts for a variety of equipment like Track Link assemblies, Track Shoe Plate, Track Shoe Bolts and Nuts, Rollers, Idlers, Sprockets and Segments, Recoil Spring, Track Adjuster Assemblies and Repair Parts for all above ; a complete range !



ROCK BREAKER PARTS

We are Importer of all Rock Breaker Parts.



OEM FILTERS

A diverse range of OEM replacement filters imported from various countries having best quality, which prove technically suitable for all type of heavy earthmoving, mining and construction equipments.



GROUND ENGAGING TOOLS

We offer wide range of tooth points, adaptors, side cutters, cutting edges, rippershanksetc source among the best manufacturers in the world. Greater strength and higher resistance to wear and breaking determine the quality of ground engaging tools. These are basic requisites to ensure economy and optimum value for money.



PIN AND BUSHES OF THE STRUCTURE

Pin and bushes used in structure of the equipment (Of the boom, arm, bucket etc) are available in dimensional accuracy most appropriate metallurgy and perfect heat treatment. These are made as per OEM standard with accurate dimensional suitability and most appropriate heat treatment.



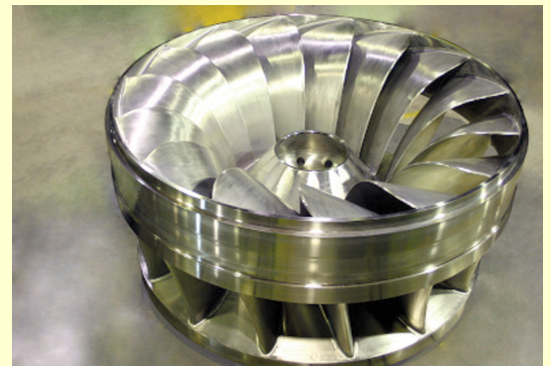
SEALKITS

We have wide range of seal kits for excavators and wheel loader operating in extremely demanding mining and quarrying applications. We also offer O-Ring kits, boxes to suit requirement of different equipment



CRUSHER

Our product range also includes Concave and Mantle for Cone Crushers and Swing and fixed Raw Plates for Jaw Crushers. We have spare parts for various models of Jaw and Cone Crushers like Mesto, Puzzolana, Nawa, Sandvik, BHS & BLPEGSON etc.



We also manufacture Phosphorus Bronze spare parts for Cone Crushers such as Brushes, Plate and other Special Alloys Parts. Jaw Plates, Concave, Mantle and Keeper Plates etc are manufactured in Manganese steel Casting, Grade-III & Grade-IV to provide better wear resistance and High Part Life.

SLIPFORM PAVERS



Auger Blades



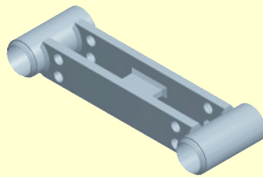
Beam



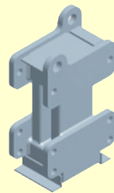
Bearing housing



Bend with clamp



Bracket



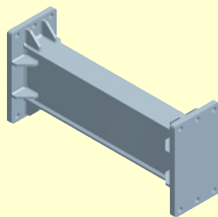
Bracket



Breaker Flat



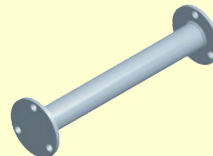
Cover



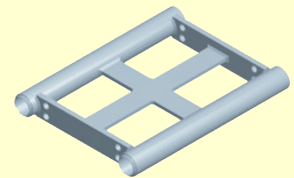
Extension beam



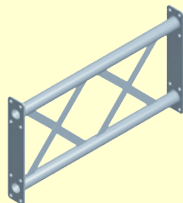
Flange



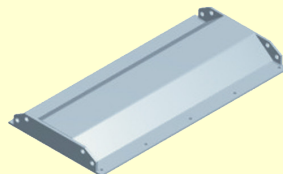
Hanger



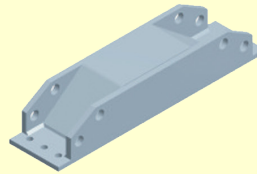
Hanger



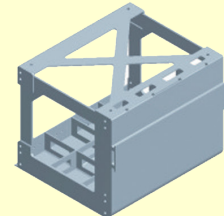
Hanger



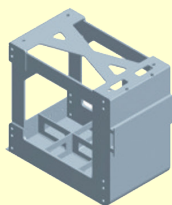
metering gate



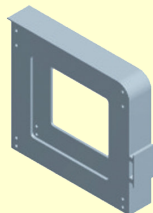
metering gate



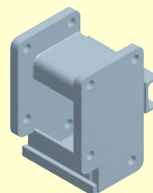
mould



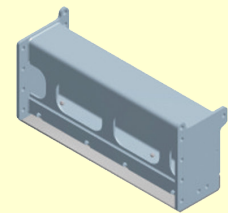
mould



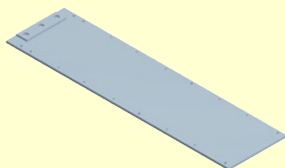
Mould



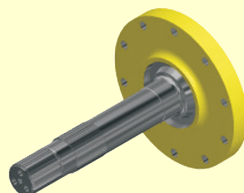
oscillating beam



Oscillating beam



screed plate



spline shaft



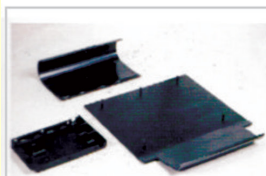
sprocket



sprocket

IMPORTED ASPHALT PAVERS

**VOGELE // BITELLI // TITAN - ABG // I.R. // VOLVO // BELOW-KNOX
DYNAPAC // MARINI // SANY // HUTONG // CAT**



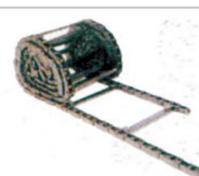
Floor Plates



Filters



Screed Plates



Double Bush Conveyor Chain



Gear Motors, Seals



Chain Wheels



Bearing Cover



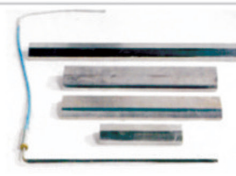
Bearing Cover, Seal Ring



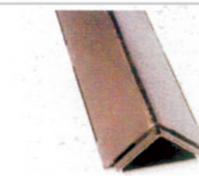
Auger Shaft



Auger Flights



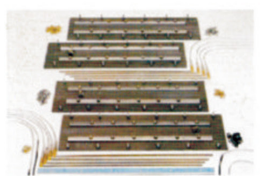
Tamper Bars & Heating Rods



Chain Guard



Pulleys



Wearing Park Kits - Screeds



Conveyor Drives



Auger Extensions



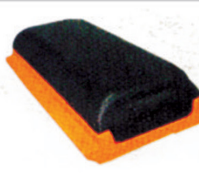
Bearing Brackets



Slope Controls



Grade Controls



Track Pad



Roller Chain



Hydraulic Pumps & Motors



Track Chain & Sprocket



Track Sprocket



MAA YOUSHODA EQUIPMENTS PVT LTD



HEAD OFFICE

**Plot No. 370/5747, Mauja, Pratapsasan, P.O- Balkati, Dist- Khudra, Bhubaneswar,
Pin- 752100, Odisha**

Contact No : 7682892165, 9583475443, 7300087778, 9437567646

E-mail : contact@myepl.in, myepl.bbsr@gmail.com, Info@myepl.in, md@myepl.in

Website : www.myepl.in

BRANCH OFFICE

**Patharquarry, Near Indian Oil Petrol Pump, House No: 205, Dist- Kamrup (Metro),
Guwahati Assam Pin- 781171**

Contact No : 7670011753, 7570011593, 7670010132, 7300087778, 9437567646

E-mail : contact@myepl.in, myepl.in@gmail.com, myepl.guwahati@gmail.com, adm.myepl@gmail.com

Website : www.myepl.in

BRANCH OFFICE

Sidharth Puri Colony, Road No : 1, Manpur, Gaya Bihar Pin - 823003

Contact No : 9583475443, 7682892165, 7300087778, 9437567646

E-mail : contact@myepl.in, Info@myepl.in, myepl.bihar@gmail.com

Website : www.myepl.in

FRANCHIESE OFFICE

Ahmedabad, Udaipur, Jammu & Kashmir, Imphal & Dimapur

PRODUCT CATALOGUE